



2024 Michigan Bridge Conference

MMA Polymer Concrete in Superior Region



Brandon Boatman, P.E.

North & Superior Region
Region Bridge Engineer
boatmanb@michigan.gov

Jordy Maloney, P.E.

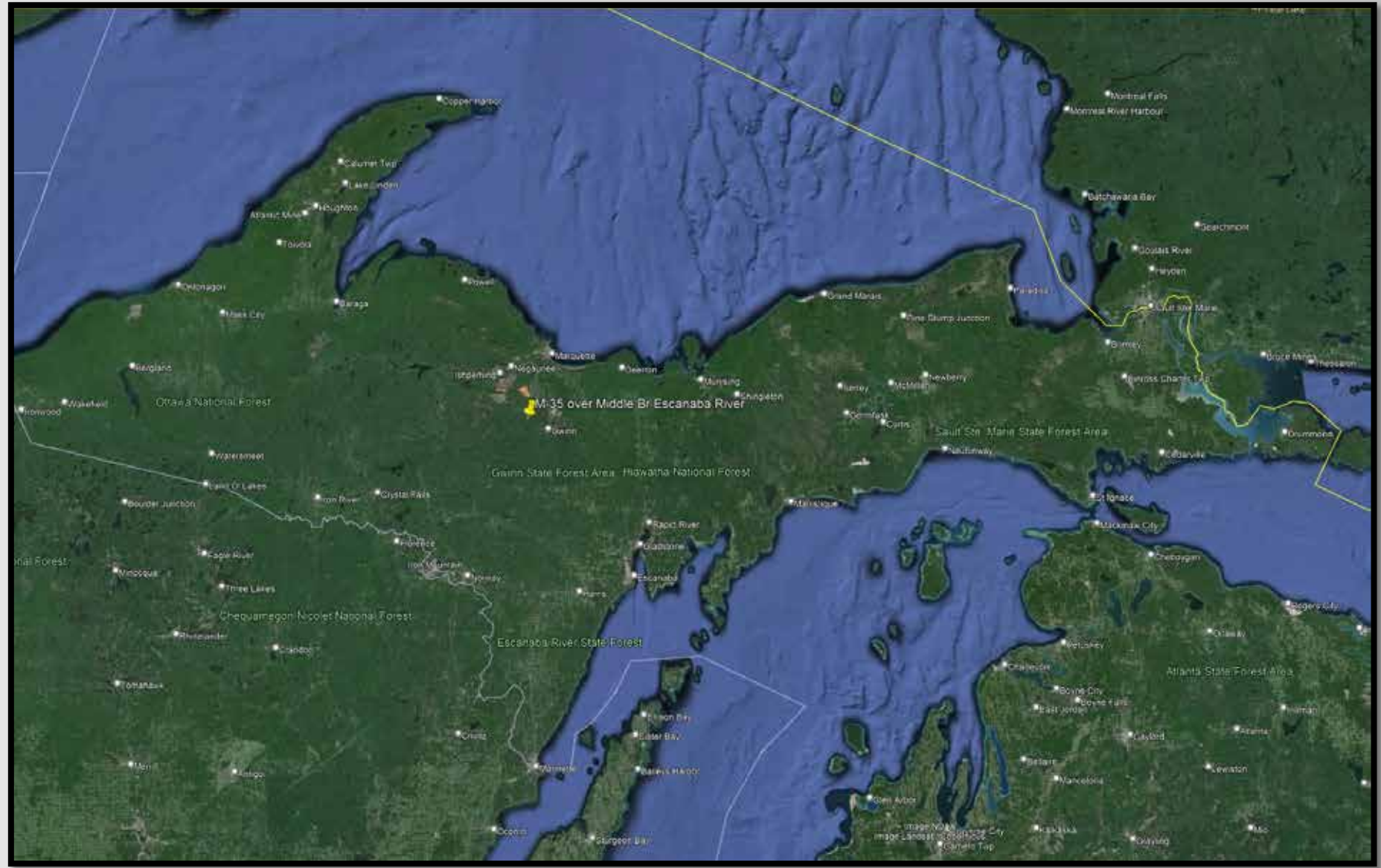
Superior Region
Asst. Region Bridge Engineer
maloneyj@michigan.gov





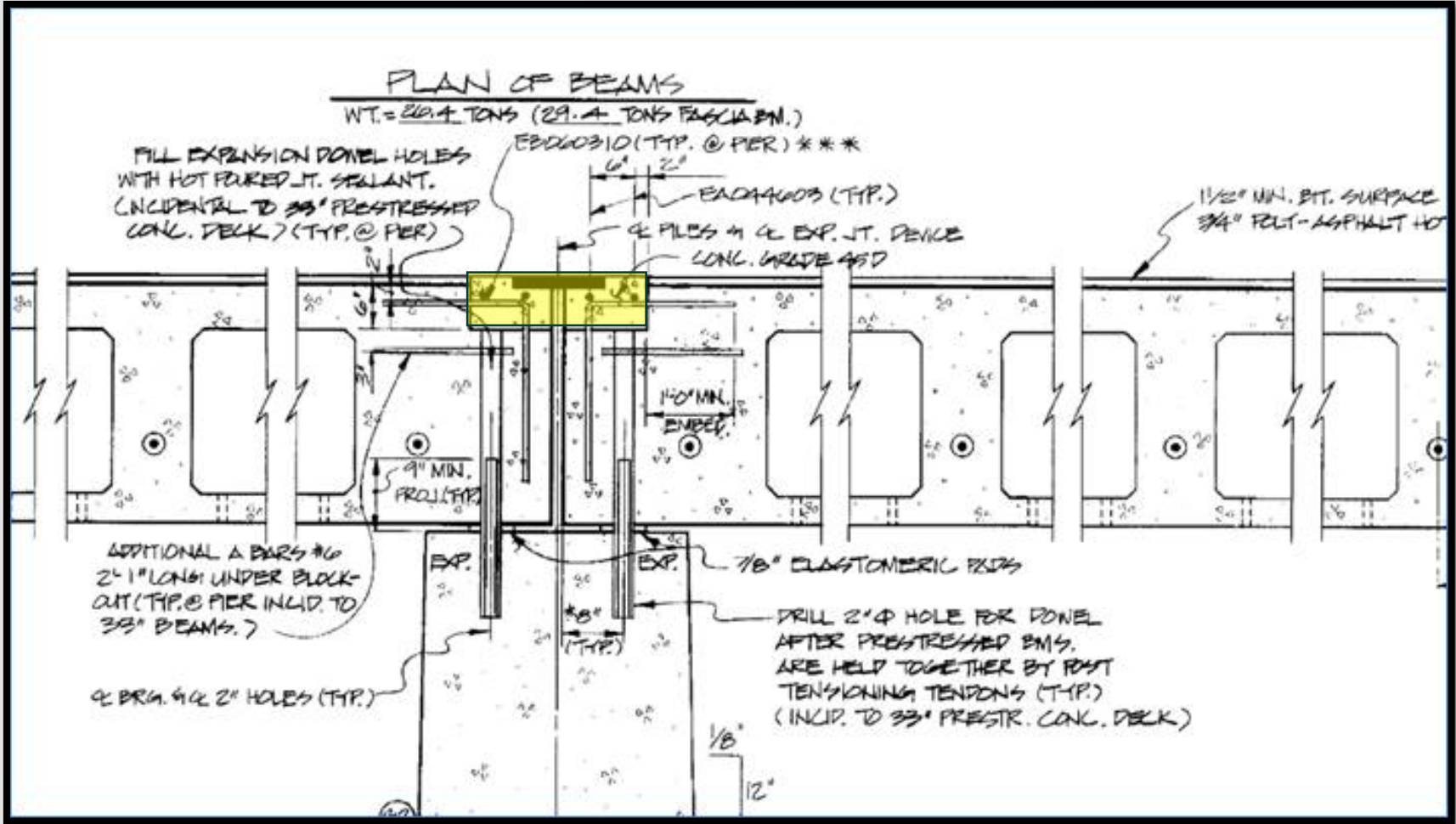
What is MMA Polymer Concrete?

- § Methyl Methacrylate (MMA)
- § Rapid Setting (45min at 70F)
- § Wide Application Range (14F – 100F)
- § Powder + Liquid + Aggregate Extension
Primer used for concrete bond
- § High compressive and flexural strength



Expansion Joint Replacement

M-35 over Middle Br Escanaba River (Gwinn)





















































M-28 over East Branch Fox River



THE PROBLEM

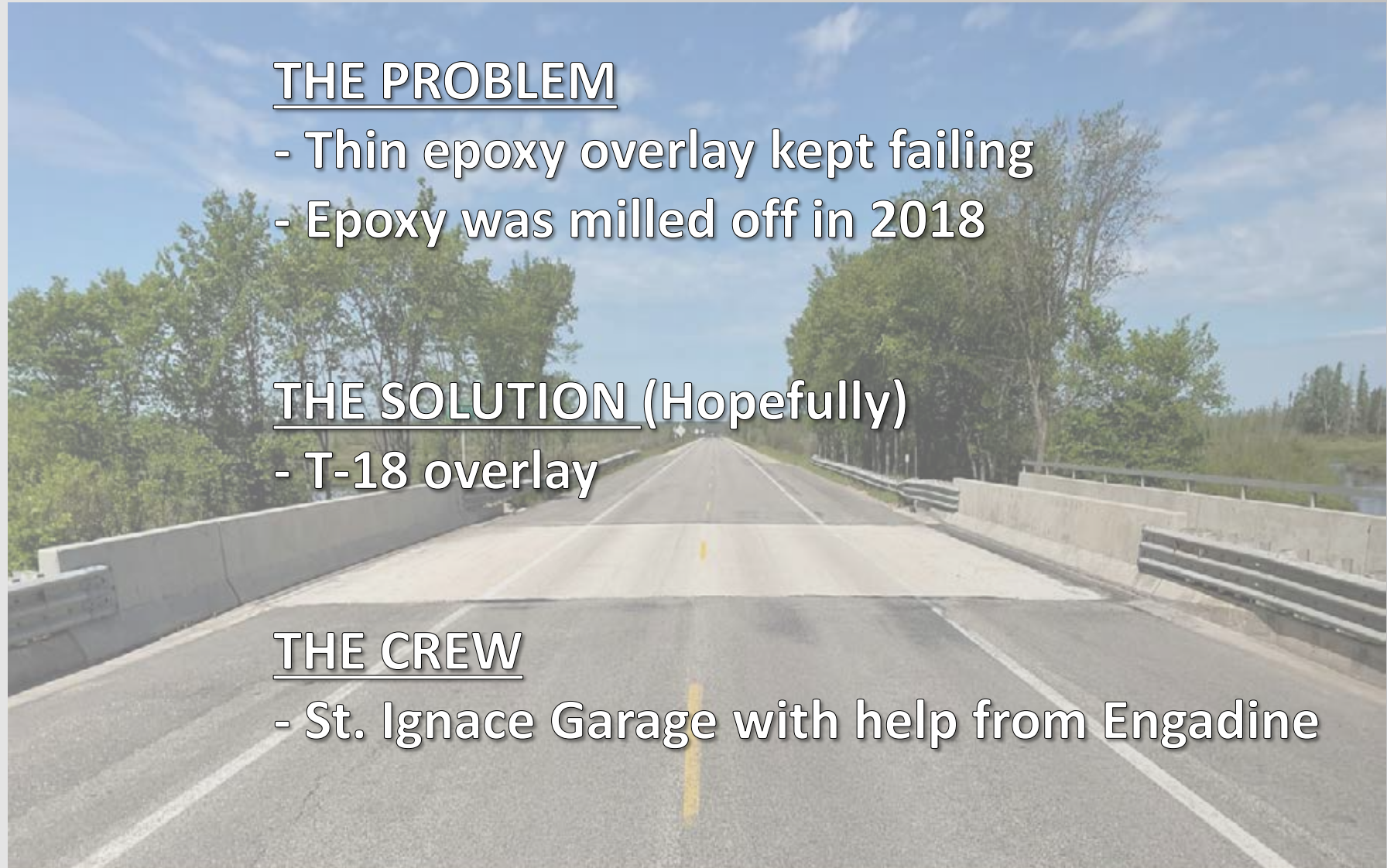
- Thin epoxy overlay kept failing
- Epoxy was milled off in 2018

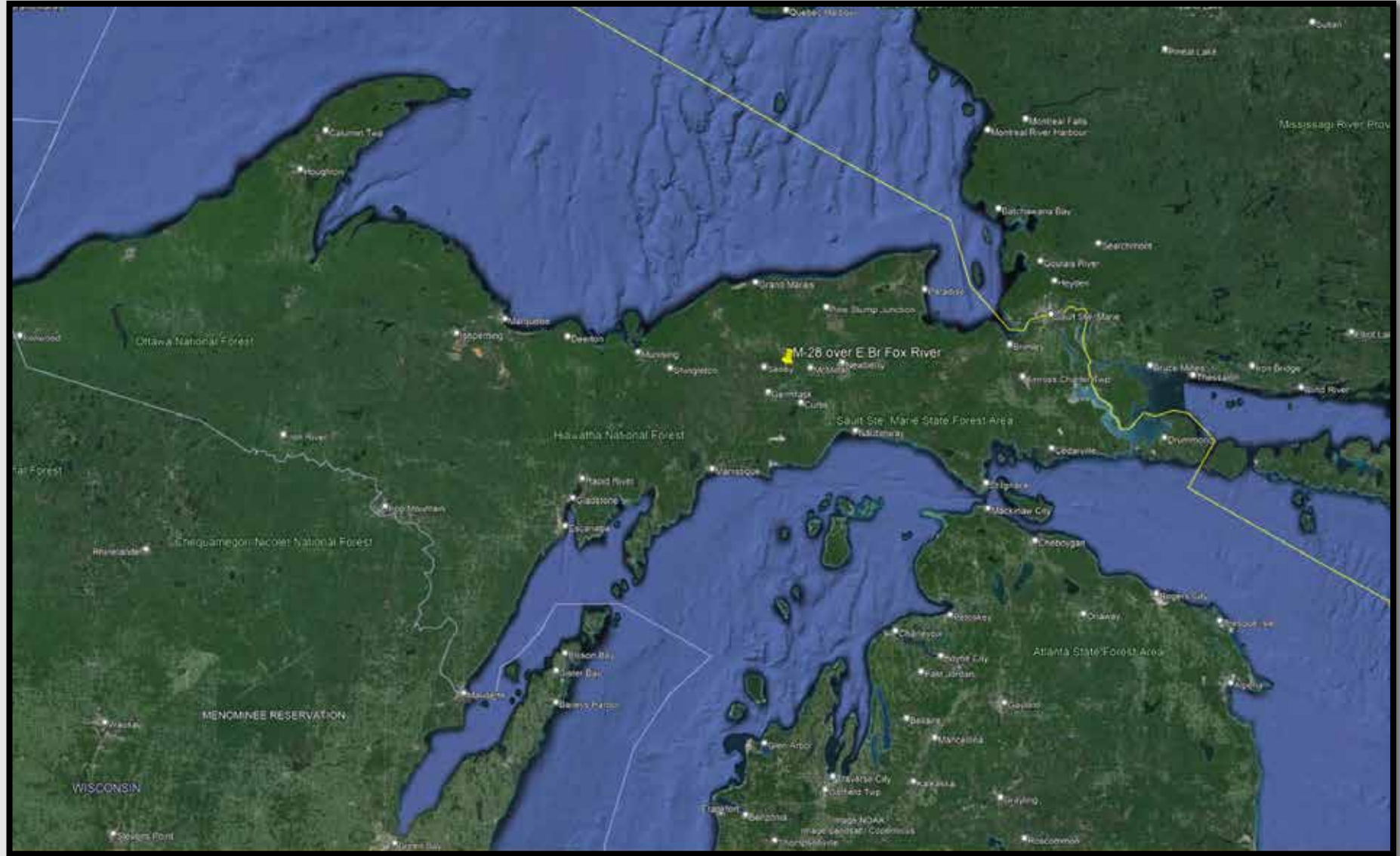
THE SOLUTION (Hopefully)

- T-18 overlay

THE CREW

- St. Ignace Garage with help from Engadine





M-28 over East Branch Fox River



T-18 Overlay



M-28 over East Branch Fox River



T-18 Overlay



M-28 over East Branch Fox River



T-18 Overlay



M-28 over East
Branch Fox River



T-18 Overlay



M-28 over East
Branch Fox River



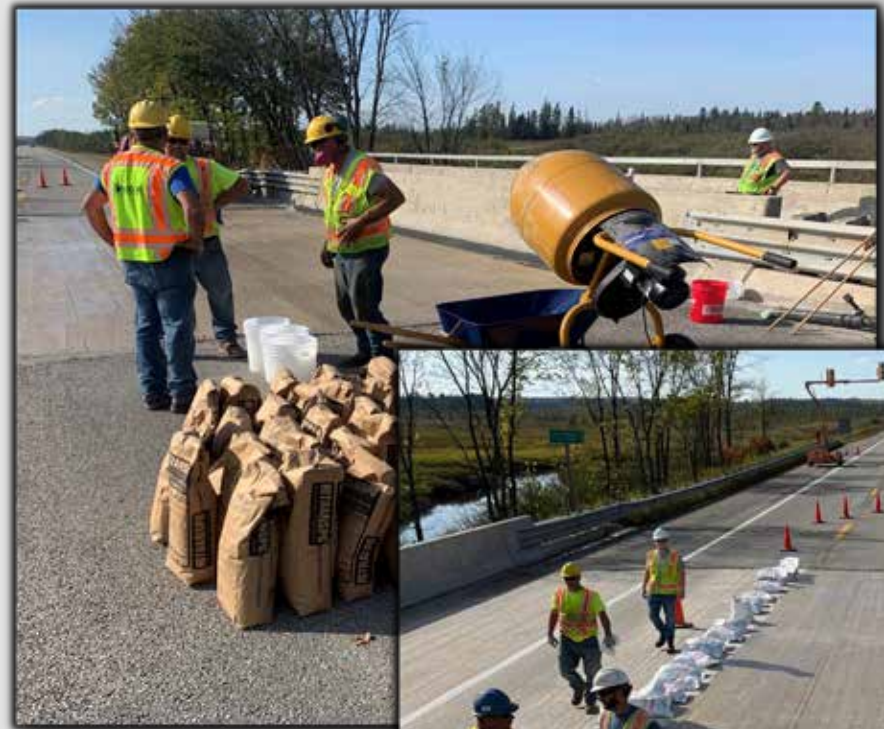
T-18 Overlay



M-28 over East Branch Fox River



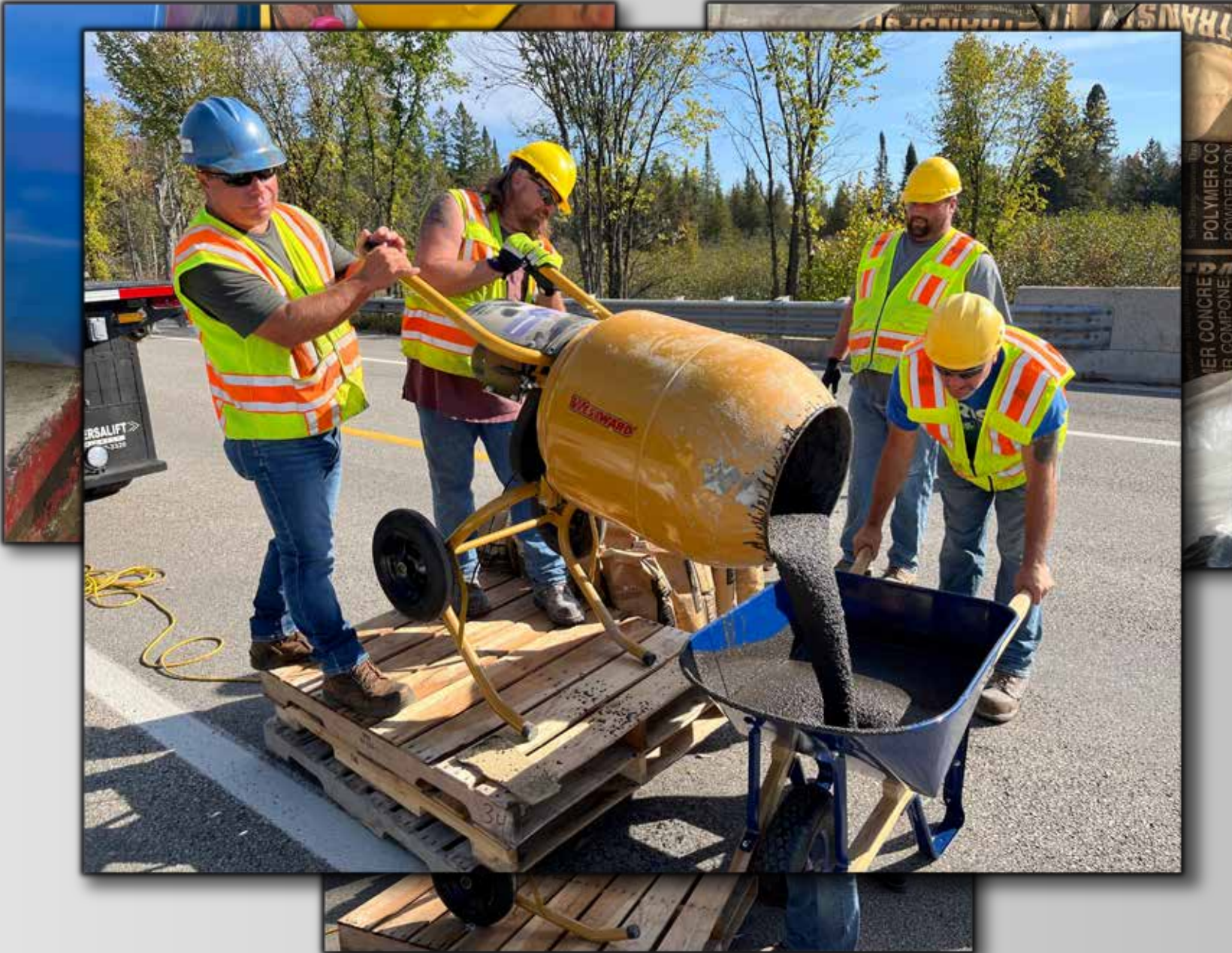
T-18 Overlay



M-28 over East Branch Fox River



T-18 Overlay



THE POLYMER CO
CONCRETE COMPOSITE POWDER CON



M-28 over East Branch Fox River



T-18 Overlay



M-28 over East
Branch Fox River



T-18 Overlay



M-28 over East Branch Fox River



T-18 Overlay



M-28 over East Branch Fox River



T-18 Overlay



M-28 over East
Branch Fox River



T-18 Overlay



M-28 over East
Branch Fox River



T-18 Overlay



